



SERVE

Host Team Prep Kit



BE A PART OF THE MUTUAL IMPACT

Thanks for your interest in hosting SERVE! You'll notice that we strategically plan for long-term, mutual impact. A short-term mission experience like this is not a one-time service event. With proper planning, it becomes part of your church or organization's long-term strategy for reaching your community and for teaching students about spreading the gospel.

ThereforeGo Ministries asks that all Serve Host Teams invest the time and energy to make an initial three-year commitment. A three-year commitment multiplies the opportunity for: personal growth, Host Team learning and delegation, and impact in the community.

If, after reading through this Prep Kit, you feel called to host SERVE, we welcome you! We commit our time and staff to assisting you as we pursue excellence in short-term missions together.

If you do not feel lead to take the next step, then please pray for the students and churches that participate in this ministry. Also, please consider referring SERVE to other churches/ministries that are active in community outreach. Many of our current host sites were told about SERVE by a business person, youth leader, parent, pastor or student.

TABLE OF CONTENTS

SERVE FINGERPRINT	PG. 3
INTRODUCING STUDENTS TO MISSIONAL LIVING AND JUSTICE	PG. 5
TYPE OF WORK SERVE ACCOMPLISHES	PG. 6
SERVE ESSENTIALS	PG. 7
SERVE VARIATIONS THAT WILL ASSIST CHURCHES	PG. 9
WHERE DO WE BEGIN?	PG. 10
WHAT THEREFOREGO WILL PROVIDE	PG. 11
WHEN SHOULD PLANNING BEGIN?	PG. 12
FREQUENTLY ASKED QUESTIONS	PG. 14
THEREFOREGO MINISTRIES MISSION STATEMENT & STATEMENT OF FAITH.....	PG. 17
SEVEN SHARED VALUES OF YOUTH MINISTRY	PG. 18
SERVE HOST TEAM GUIDELINES	PG. 19

SERVE FINGERPRINT

There are many types of mission trips for students. Here is the unique description of SERVE.

SERVE is typically a one-week mission trip in Canada or the United States that introduces middle school and high school students to spreading the gospel through missional living and confronting issues of justice. Each project is planned with personal, mutual benefit in mind. SERVE is hands-on and people-oriented, and so has a very personal and long-term impact on all involved.

ESSENTIAL ASPECTS OF SERVE:

Christ-honoring, church-assisting, youth-focused, adult-supported, service-centered, weeklong, intentionally relational, all-inclusive, affordable, and a good introduction to missional living and justice. This emphasizes the need for transformation at a personal, congregational, community and global level. SERVE helps set an environment for long-term impact for all the participants, including:

Students and their leaders: Through serving, students have the opportunity to grow in gratitude and generosity. Those are essential building blocks to a life of worship and stewardship. Through personal devotions, evening worship sessions, Biblical messages by an inspiring Speaker and small group discussions, the environment is set for personal spiritual growth. The church youth ministry can build on this experience to train students in justice so that they can impact this world for Christ through a lifestyle of missions. Students will learn about and have opportunity to discuss such things as creation care, community revitalization, and sustainable ways to feed the hungry, provide shelter for the homeless, clothe the needy, care for widows and abide with those who feel abandoned. Sound lofty? Don't forget your work gloves!

Host Community: Groups that attend may join 30 – 100 other people (depending on the site choice), hosted by a local congregation or a network of ministries to help advance year-round impact in that community. Students and leaders will join, and learn from, experienced ministry leaders in the community who have been praying for laborers. Those who come to SERVE will see the needs, help meet the needs, and as they do, learn that those being served have much to give as well. This temporary workforce will bring glory to God, encouragement to believers and a strong testimony to those not yet following Christ, while advancing the efforts of the Host Church/network of ministries.

Host Congregation: Every Host Church has a next step to consider in raising their level of prayer, leadership multiplication and strategic community outcomes. The SERVE experience is designed to build momentum by enhancing the existing year-round plans of the church.

ThereforeGo Ministries has more than 30 years of student-focused, short-term mission experience and draws on the strength of international relationships and resources.



"I BECAME INVOLVED IN SERVE BECAUSE I SAW HOW IT CHANGED TEENS' RELATIONSHIPS WITH CHRIST. THOSE THAT KNOW HIM ALREADY GROW CLOSER TO HIM, AND ARE AN EXAMPLE TO OTHERS. THOSE THAT THINK OF THEMSELVES AS CHRISTIANS BECAUSE THEY WERE RAISED IN THE CHURCH OFTEN START A PERSONAL RELATIONSHIP WITH CHRIST. THEY MAKE THE FAITH THEIR OWN. THE LAST GROUP IS MY FAVORITE. MANY COME FOR SOCIAL REASONS AND MEET JESUS FOR THE FIRST TIME. ALL OF US, AND I INCLUDE MYSELF; GROW CLOSER TO GOD IN THE PROCESS. WE THINK WE ARE GOING TO BE A BLESSING TO OTHERS, AND WE ARE BLESSED OURSELVES."

**-JOHN MACPHERSON,
WASHINGTON D.C. (FAIRFAX)
HOST TEAM**

INTRODUCING STUDENTS TO MISSIONAL LIVING AND JUSTICE

Many students today are reflecting the heart of God when they look at the world and exclaim that things aren't right. A one-week service project becomes an opportunity to introduce students to living their entire life for the sake of the gospel. Students will learn that the desire to serve others and set things right is an outcome of their relationship with Jesus Christ and a means for sharing Jesus Christ with others.

Justice moves beyond serving and meeting needs to more holistic and systematic solutions. It is:

- Required – commanded by God
- Redemptive – considering every person and effort in the light of Jesus Christ
- Relational – impacting the community even in personal decisions
- Reciprocal – consistently understanding and working toward mutual benefit
- Reconciling – cultivating the character traits of Christ into daily life
- Risky – necessarily courageous
- Reliance on the Holy Spirit



"HAVING 60 STUDENTS AND ADULTS FROM CANADA AND THE U.S. JOIN US FOR SERVE WAS A MOMENTUM BUILDER. WE'RE INSPIRED, ENCOURAGED AND CONFIDENT AS WE CONTINUE IN OUR CALLING TO SHARE CHRIST WITH OUR COMMUNITY."

-PASTOR NORM SENNEMA
AJAX HOST TEAM

TYPES OF WORK SERVE ACCOMPLISHES

SERVE worksites include basic service opportunities that give students cause to exercise Micah 6:8 (act justly, love mercy, walk humbly) as a tangible expression of the gospel message. While SERVE is not directly an evangelistic training effort, the gospel is shared by the Host Church/Organizations, and the workforce compliments that message through words, actions and attitudes.

- **Community Revitalization:** Light construction, maintenance, cleaning, demolition, general improvements to homes, non-profit offices, local government buildings/land, cleaning vacant lots, building wheelchair ramps, etc.
- **Compassion for the Marginalized:** Those in need of food and clothing benefit when SERVE participants sort and distribute these essentials with hope and joy. Also benefiting from this are persons in need of social acceptance and genuine affirmation such as the developmentally, physically or cognitively disabled. The “working poor,” though they may not be destitute, often feel overlooked and have legitimate needs that a student workforce can help to meet. Tangible and non-tangible needs are addressed as SERVE participants listen to and learn from the life stories of those receiving the work.
- **Creation Care:** Some tasks in this category seem like mundane chores until we consider that God himself commanded we be wise stewards of his world. Community gardening, cleaning up a park, repairing bike trails, feeding horses used for therapy, installing erosion fencing—all have profound impact and help to change lives.
- **Recreational Ministry for Children:** Whether in a city park or a community outreach program, caring for children can help impact the entire family and the future. Simple games, crafts, songs and Bible stories can be used to educate and minister to children and their parents.
- **Acts of Kindness:** This goes way beyond busy work, turning the receiver’s thoughts and attention, if just for a few moments, to the love of Christ. This also helps the Host Church/Organizations with their public relations by canvassing an entire area to build Christ’s reputation in the greater community.

SERVE typically impacts the following participants each year:

- 1,600 students and leaders who give over 38,000 hours of community service.
- 26 Host Teams representing local congregations/organizations who serve all year.
- Thousands of prayer partners (hundreds designated by the Host Team and more from the Sending Church/family/friends) who pray daily before, during and after the designated week.
- Thousands of men, women and children who are served at the worksites. These individuals also teach students that those in need have much to offer.

SERVE ESSENTIALS

1. The Statement of Faith: The Host Team agrees with and promotes the Mission Statement and Statement of Faith of ThereforeGo Ministries.
2. The purpose of SERVE is to help students grow in their faith in Jesus Christ and help equip them to transform their world for him. Decisions made by the Host Team are filtered through the questions of mutual benefit.
 - Does this help students grow in their faith and introduce them to a deeper lifestyle of missions and justice?
 - Does this help our church/network of ministries with our ministry to the community?
 - Does this positively impact those we are serving in our community?
3. A capacity of 30-100 high school students and their leaders. The Host Team will be willing to accommodate ethnically, culturally and denominationally diverse participants.
4. Use of theme materials supplied by ThereforeGo Ministries must be a focal point for personal devotions, small group interaction and large group sessions.
5. The fee charged provides a complete onsite package, including:
 - Food
 - Lodging
 - Daily schedule with planned activities
 - Gifted Christian Speaker(s) and Worship Leader who relate well with the student participants
 - Worksites with proper supplies and supervision
 - Recreation, including a Day Away and free time activities
6. Worksites that are hands-on, service-centered projects. At least 75% of worksites need to provide meaningful conversations so students can learn from the resident/clients of the ministry. Ministry leaders need to express the need being met and educate the students on the sustainable ministry.
7. Work teams and small groups are to be the same, consisting of four to eight students with one adult per every five students. For SERVE sites, the Host Team makes every effort to avoid having more than one or two members of a church in the same small group.
 - Trust and relationships grow among the small group members as they work alongside each other during the day, which leads to open discussions during the small group time.
 - Host Teams are to encourage youth groups that come from the same church to meet together periodically during the week to debrief how things are going.
8. Security and Safety
 - All students and adult leaders must be registered through ThereforeGo even if they are from the local area.
 - A Risk Management plan must be put in place with the following understood:

- Youth should never be left at a worksite (or anywhere) without the presence of an adult from the SERVE experience.
 - Curfew (lights out) is no later than 11:00 PM, with the exception of 1:00 AM on the final night. For liability and safety reasons, there cannot be an all-nighter on the final night.
 - The Host Team will address safety through consistent emphasis. All Host Team members, adult leaders and students must follow the Worksite Safety Standards.
 - ThereforeGo Ministries will provide liability and secondary health insurance for all registrants.
 - Incident reports must be filed promptly.
 - ThereforeGo Ministries has a no tolerance policy on issues related to harassment.
9. Leading students to a proper focus for the week:
- Dress Code: ThereforeGo Ministries communicates the dress code to all registrants in confirmation emails. Swimsuits must be modest for both genders. Enclosed footwear is required at the job sites. Modest apparel is a necessity, and more detail is given in the Host Team Manual and the confirmation emails. The Host Team has the final say in these issues.
 - Personal devices such as cell phones, iPods, etc. must include use of earphones and be used only during free time. More detail is given in the Host Team Manual.
10. Prayer: The Host Team is to promote prayer before, during and after the SERVE project. Everything should be bathed in prayer by the congregation. It is not necessary to have a prayer partner for each registrant, but many sites do. See the Host Team Manual for more on this.

“AS HOST TEAM CO-COORDINATORS, BOTH SHARON AND I BELIEVE THE FUTURE OF THE CHURCH RELIES ON TRAINING THE YOUTH IN THE WAY THEY SHOULD GO. IF WE STOP AT SUNDAY SCHOOL AND DON'T GIVE THEM MORE WAYS TO DISCOVER AND NURTURE THEIR LOVE OF JESUS, WE MAY WELL LOSE THEM TO THE DEVIL SINCE HE NEVER QUILTS TRYING TO WIN THEM OVER. SERVE PROVIDES AN OPPORTUNITY FOR BOTH YOUTH AND ADULTS ALIKE TO STRENGTHEN THEIR FAITH THROUGH INTERACTION WITH EACH OTHER AS WELL AS SERVING THOSE IN NEED.”

-DALEN ASCHE - MINNEAPOLIS, MN SERVE

SERVE VARIATIONS THAT WILL ASSIST CHURCHES

Because ThereforeGo Ministries is a church-assisting organization, we want to respond to churches that have requested the following types of mission experience. The overarching principles will remain the same with some slight variations.

1. **Special Needs SERVE:** Whenever possible it is ideal to include those with special needs in typical situations with the body of Christ, learning and serving together as one. In situations where this may be too difficult, special needs sites will function with the same goals as other SERVE sites, only catering to students/young adults with special needs, who are between the ages of 14 and 26 by July 1.
2. **Spring Break SERVE:** The variation here is the timing. Each year a number of church youth ministries look to take their students on a SERVE project during March or April. Having Host Teams, especially in the Southern United States, prepared to meet this need is ideal.
3. **Custom SERVE:** A SERVE site may be designated to specifically build unity and provide discipling opportunities for the sending churches by allowing the adult leaders to oversee their own students for small group interaction and worksite assignments. These sites will still program interactive activities to properly integrate groups during orientation, meal times, etc.
4. **Middle School SERVE:** The variation here is the age bracket and length of the experience. This may cause changes in the types of worksites. Some organizations require volunteers to be more than 14 years of age. Consider your worksite options before planning a Middle School SERVE. Also, a Middle School SERVE lasts six nights.

WHERE DO WE BEGIN?

1. Pray with and talk to other ministry leaders in your church/area about cooperatively hosting a SERVE.
2. Brainstorm ideas for possible worksites in your area. Criteria for sites:
 - a. Within reasonable driving distance from your home base of operations.
 - b. Provide some interaction with the receivers of the work. While this week is to be service focused, the students need to be able to understand the need and personal stories behind the work so they can learn from the experience.
 - c. Part of an ongoing community outreach.
3. Make initial contacts to explore these site possibilities further. Do not promise anything.
4. Determine your capacity. Keep in mind that we would like to be able to involve 30-100 students and adults. Consider how many students and adult leaders you can accommodate. You'll need to provide them with:
 - a. Meaningful work for the week
 - b. Sufficient space for inflatable beds and their luggage
 - c. Showers
 - d. Nutritious meals
 - e. A large enough meeting room and enough space for small group meetings
5. Submit a Site Description and Commitment Form to ThereforeGo Ministries.
 - a. This form will communicate your intent to host a SERVE experience and the commitment of key ministry leaders (namely the Host Team Coordinator, Pastor, and a council member/director).
 - b. The Host Team is asked to develop objectives based on the desired outcome in the participants' lives. The participants can be categorized as the host community, host congregation, students and adult leaders. Four or five clear, realistic and measurable objectives for each of those two types are sufficient. Matching the objectives to specific principles on pages three to five of this document will be essential.
 - c. Read the Host Team Manual.



WHAT THEREFOREGO MINISTRIES WILL PROVIDE

Pre-SERVE:

- Comprehensive training and encouragement, including a SERVE 101 for your entire Host Team
- Opportunity to attend the *ThereforeGo Leadership Summit*
- A detailed timeline of action steps to take and what documents must be submitted to the ThereforeGo Office
- Advertising, recruitment, registration and collection of fees for all participants
- A portion of the monies received from the participants to help cover the cost of the local SERVE budget

Onsite/During SERVE:

- A representative onsite during the week the first year. This person will be there to support, encourage, instruct and help work through any issues that arise.
- Spiritual Life Guides, devotional books, wristbands and nametags for each participant
- Up to 20 t-shirts per Host Team for mission experiences with more than 10 participants. Additional t-shirts are available at cost.
- Secondary medical insurance for participants and registered Host Team members

Post-SERVE:

- A detailed timeline of action steps to take and documents that must be submitted to the ThereforeGo Office
- Concise evaluation reports
- Follow-up materials for the registrants
- Continual improvement via communication with other hosts and short term mission leaders
- Ongoing relationship



WHEN SHOULD PLANNING BEGIN?

First Year Overview

NOTE: More specific timelines for each role can be found with the Job Description in the SERVE Host Team Manual, which will be provided to you after your mission experience has been approved.

Winter/Spring, 12 to 16 months before your first SERVE:

The following takes place after reading this document and having preliminary discussions with the Missions Program Director.

1. Communication between ThereforeGo Ministries and Host Church/Organization.
2. Approval from the Host Church's Council.
3. Verbal approval is received from the Host Church/Organization and a Site Description and Commitment Form is signed by the Host Team Coordinator and church leadership and is submitted to the ThereforeGo SERVE Director. (Deadline August 1 of the year before you host)
4. Confirmation of details, date, number of participants desired. Special skills and qualifications needed are identified.
5. The Host Team is organized and all key leadership positions are filled.
6. Coordination with the SERVE Director for the new Host Team Coordinator (and others from the new Host Team) to participate in a SERVE experience the year prior to leading their initial experience. Rookie Host Team Coordinators can observe, interact with the Host Team and get a taste of SERVE from the leader's perspective.

Late summer before your first SERVE:

1. Consider all lodging, food and budget details.
2. Provide site description and other details to the ThereforeGo office by August 1.

Fall before your first SERVE:

1. Potential registrants begin searching for mission opportunities.
2. SERVE registration begins.
3. Obtain commitments for Speaker and Worship Leader, if applicable.

January – April:

1. Attend the *ThereforeGo Leadership Summit* to build SERVE knowledge and meet other Host Teams.
2. Begin securing worksites. If needed, meet with the SERVE Director to review process and project details.

May:

1. ThereforeGo Ministries will send you a Site Allocation Check based on the current number of registered participants.
2. Talk with your team about hosting a SERVE experience for the following year.

Six weeks prior to SERVE:

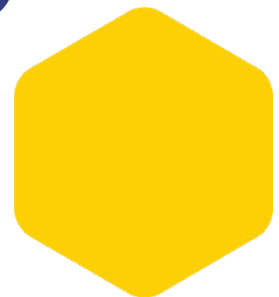
1. Mail all participants a welcome and information letter containing necessary information concerning the mission experience. Send a copy to the ThereforeGo SERVE Director for reference in case participants or parents contact the ThereforeGo Office. (Note: ThereforeGo Ministries has examples for these letters that each Host Team can customize for their use.)
2. Contact all adult leaders to discuss your team's expectations of them and to verify their skill level for leading a small group. If you have enough adults, you may wish to pair rookie adult leaders with experienced adult leaders.
3. ThereforeGo Ministries will send adult leaders an informational letter explaining their areas of responsibility, tips for leading a small group and the devotional material. Adult leaders are expected to lead a small group. These small groups work as a team and have discussions/prayer time together.

June – August:

SERVE experiences take place (Spring Break SERVEs are earlier). Note: The first year a representative from ThereforeGo Ministries will be onsite for part of the experience. He/she will be there to assist, support, observe and help you solve problems that may arise. The ThereforeGo Ministries representative should not be scheduled as a small group leader as the representative will be there to help the Host Team, observe and troubleshoot issues as they arise.

60 days post-SERVE:

Final reports, final budget, and all receipts and unused funds are due in the ThereforeGo office.



FREQUENTLY ASKED QUESTIONS

What does a typical SERVE schedule look like?

A typical SERVE experience begins on Saturday afternoon/evening with registration and welcoming the participants. Saturday evening is spent on orientation to the lodging facility and getting to know each other with some organized mixer games, refreshments and some free time.

Sunday morning there is a commissioning service at the Host Church. The afternoon is used for team building, orientation to the area/community, prayer walks, meeting prayer partners and organized fun.

Monday through Friday, the participants begin their day with breakfast, followed by planned personal devotions, then head out to their worksites. Work hours run from about 9:00 AM to 4:00 PM. After returning from work, the participants will shower and have some free time. After the evening meal, there is a session based on the theme and led by the Worship Leader and Speaker.

Assigned small groups meet to discuss the day's work and what the Speaker talked about and to spend time in prayer. This enables the participants to process the day's experiences and see God integrated through every aspect of the experience and extending into their life when they return home. Then it is off to bed. Lights out occurs at 11:00 PM, except for the last night which can be extended to 1:00 AM.

A Day Away is planned by the Host Team to a local attraction. This might involve a trip to the beach, theme park, sightseeing, etc. The cost is covered in the registration fee. Host Teams cannot charge participants an additional amount for the Day Away.

Departure from the site happens on Saturday morning right after breakfast. Some youth groups may request an earlier departure if they have a long way to travel home.

Where do the participants stay?

The Host Team is responsible for arranging lodging, typically in a church or school. Participants bring their own bedding (sleeping bag/pillow/air mattress) and towels for showering. Hosts must provide clear boundaries for gender-designated sleeping areas. Typical churches do not have sufficient facilities (areas for sleeping, meeting or showering) so many Host Teams use a school. It is possible to sleep and meet in one location and use the showers of a school or YMCA.

Why does ThereforeGo require a three-year commitment?

Your long-term commitment has a greater impact for your church/organization and community. In order for a short-term mission experience to have a long-term impact for your

church/organization and community, it needs to be more than a one-time, one-week experience. Host Teams learn a great deal in the first year, so it becomes easier to replicate and get more support from their Host Church or community in the second and third year of hosting.

There are an increasing number of students looking for more short-term mission opportunities. A high rate of turnover is the enemy of quality control. Since we want students to be properly introduced to missional living, we must all work toward consistency and the pursuit of excellence in short-term missions.

How can our local youth group be involved in the SERVE experience?

You are highly encouraged to involve your local students in your mission experience. It is a great opportunity for them to grow as leaders and to see the needs and the impact they can have in their own community. There are two ways to involve your local youth group in hosting your mission experience:

1. As members of your Host Team.

As members of your Host Team, your students can serve on sub-committees, be assistants for each of the key leadership positions, help with hospitality, assist in the kitchen, serve on an encouragement team and more. If they choose to be part of the Host Team, they can stay onsite overnight and be part of all the evening activities. They cannot be part of a small group for either the evening discussions or to serve on worksites.

As part of the Host Team, they will need to complete a Host Team Registration Form online (different than the participant registration form) and they do not need to pay the participant registration fee. One caution when involving students in your Host Team: they sometimes do not have the emotional maturity to separate themselves from the participants and are not seen as authority figures by their peers.

2. As participants in SERVE.

As participants in SERVE, your students can actively participate in the mission experience, just as a student from another city, state/province would. They should be required to be part of a small group, participate in small group discussions, go to worksites every day and stay overnight onsite.

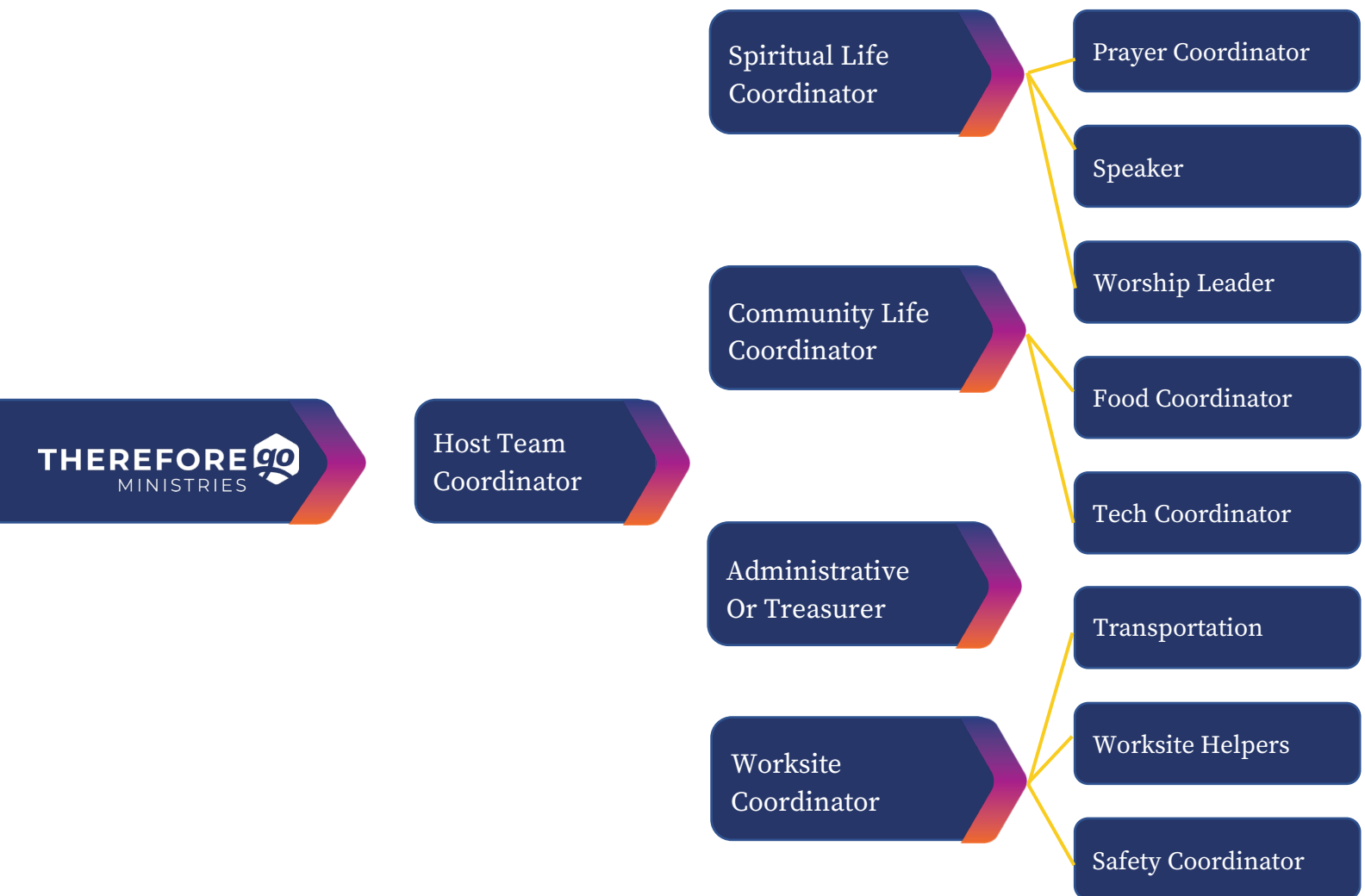
You should have the same expectations for your local students that you would for any students coming from elsewhere—they should not have outside family, athletic or employment commitments during the mission experience. They should participate in the entire mission experience from start to finish.

If a student chooses to be a SERVE participant, then she or he must complete a Participant Registration Form and pay the registration fee. Due to liability and insurance reasons, this is a requirement.

What does the Host Team Manual include?

The Host Team Manual is an excellent resource compiled by ThereforeGo Ministries with the help of veteran Host Churches from the last 20 years. It includes: Introduction and Overview, Host Team Coordination, Spiritual Life, Community Life, Worksite, Financial Management, Servant Evangelism, Prayer, Safety, Building Relationships with Youth, Incidents, Branding, Social Media, Logo Use and Continuous Improvement. This Host Team Structure flow chart (explained in detail in the Host Team Manual) gives a brief overview of the structure of SERVE.

Host Team Structure
(recommended)



THEREFOREGO MINISTRIES MISSION STATEMENT

ThereforeGo Ministries helps churches challenge youth and emerging adults to commit their lives to Jesus Christ and transform their world for Him.

THEREFOREGO MINISTRIES STATEMENT OF FAITH

The Bible is the inspired, infallible Word of God, and it serves as our rule for faith and life.

God has revealed himself as Father, Son and Holy Spirit, and in Jesus Christ all the fullness of the godhead dwells bodily.

God created the heavens and the earth, and humankind was created in the image and likeness of God. Because of Adam's sin humankind is separated from God and unable on its own to be reconciled to God.

The sacrificial death and bodily resurrection of Jesus Christ has provided the only way of reconciliation with God, which is why we call Him Savior.

Jesus Christ was conceived by the Holy Spirit, born of the virgin Mary, lived a sinless life, and now reigns at God's right hand, which is why we call him Lord.

Through Jesus' redemption, all of creation can be claimed and restored through the Spirit. Therefore, we are ambassadors of Christ's Kingdom in all of society.

Salvation is God's free gift based upon the atoning work of Christ, and this gift is affected by the regenerating work of the Holy Spirit in the hearts of people and received by faith in the Father, Son and Holy Spirit.

Jesus Christ will come again to judge the living and the dead. The Righteous—those who are justified by faith in Christ—will inherit eternal life, and the wicked—those who remain in their wickedness because they reject Christ—will be condemned eternally.

We believe that the local church plays the central role in the fulfillment of the Great Commission and that the spiritual unity of believers comprises the one body of our Lord Jesus Christ.

People who are apart from God matter to God, and therefore matter to the church. For this reason it is the individual Christian's and the church's responsibility to proclaim the Gospel in word and deed, by every means possible, through a life of holiness, service, and love.

SEVEN SHARED VALUES OF YOUTH MINISTRY

ThereforeGo's mission to support churches in challenging youth and emerging adults to commit their lives to Jesus Christ and transform their world for him is guided by Seven Key Values:

1. **Intentional** – “Commit to the Lord whatever you do, and your plans will succeed” Proverbs 16:3. Everything that occurs within the ministries of ThereforeGo Ministries is focused through its mission to equip churches so that youth may come to transform the world for Christ.
2. **Relational** – “From him the whole body, joined and held together by every supporting ligament, grows and builds itself up in love, as each part does its work” Ephesians 4:16. ThereforeGo Ministries connects with churches and their youth workers in personal and corporate ways to build a network of ministry support throughout North America.
3. **Transformational** – “Do not conform any longer to the pattern of this world, but be transformed by the renewing of your mind. Then you will be able to test and approve what God's will is—his good, pleasing and perfect will” Romans 12:2. ThereforeGo Ministries brings Reformed Biblical truth within all programming, teaching and training, creating a base for churches and their youth workers to grow faith and discipleship within the lives of their youth.
4. **Exemplary** – “Do your best to present yourself to God as one approved, a workman who does not need to be ashamed and who correctly handles the word of truth” 2 Timothy 2:15. ThereforeGo Ministries builds and equips youth workers to network and live out their faith while being in relationship with youth.
5. **Nurturing** – “Like newborn babies, crave pure spiritual milk, so that by it you may grow up in your salvation, now that you have tasted that the Lord is good” 1 Peter 2:2-3. ThereforeGo Ministries provides experiences and materials for youth workers to use for growing and developing students' faiths individually and corporately.
6. **Responsive** – “I have become all things to all men so that by all possible means I might save some” 1 Corinthians 9:22. ThereforeGo Ministries continues to adapt to the fluid nature of youth ministry and youth culture in order to stay relevant to meet the needs of youth, families and the church.
7. **Evangelistic** – “Therefore go and make disciples of all nations, baptizing them in the name of the Father and of the Son and the Holy Spirit, and teaching them to obey everything I have commanded you. And surely I will be with you always, to the very end of the age” Matthew 28:19-20. ThereforeGo Ministries equips the church that they may empower their youth to respond to God's call and live out their lives for him.

SERVE HOST TEAM GUIDELINES

Choosing mature and competent Christian leaders is very important to the success of a mission experience. Core responsibilities are carried out by Host Teams typically made up of at least five to six adults. Each must be onsite or servicing the worksites the entire week of SERVE. This includes sleeping onsite.

The SERVE Host Team will consist of five key positions. They are:

- Host Team Coordinator
- Spiritual Life Coordinator/Speaker
- Community Life Coordinator
- Worksite Coordinator
- Coordinator of Local Volunteers

Timelines and ideas for each of the key positions as well as additional job descriptions for Music Leader(s), Prayer Coordinator, Technology Coordinator, Food Coordinator, Safety Coordinator, Transportation Coordinator, Worksite Helper(s) and other roles will be provided in the Missions Host Team Manual to serve as a guide for the Host Team as you shape your SERVE experience.

The next step will be contacting the SERVE Director, discussing with your church leadership and reading through the SERVE Host Team Manual.

Once again, thank you for your interest in hosting a SERVE mission experience.

We are praying that God would lead you to a good decision for your congregation and your community. By working together we can assure that every SERVE experience is hosted with excellence and done for the good of the next generation and for the glory of our Lord, Jesus Christ.

Please call with any questions or concerns. We are here to enable you as we seek to assist churches in challenging students.

For the staff of ThereforeGo Ministries,
Amanda Roozeboom



SERVE Director
Amanda@thereforego.com
616.241.5616 ext. 3046